



2016 MEMBER REPORT

December 29, 2016

Board of Directors

Equity and Inclusion Values Statement

Committee Reports

Midwife of Wisdom Award: Cynthia Jaffe, LM

MAWS Award 2016: Valerie Sasson, LM, CPM

Contact Info

Board of Directors

Thank you to our outgoing members for their wonderful collaboration and leadership and to our continuing members for their commitment. Welcome to our new members! We look forward to what 2017 brings for midwifery in Washington and how we can lead the way toward better collaboration, outcomes, and reimbursement.

Welcome	Continuing	Continuing	Farewell
Tinneca Fortin , LM, CPM Sumner	Sarah Joy Day , LM, CPM Bellingham Vice President	Neva Gerke , LM, CPM Tacoma President	Kristin Kali , LM, CPM Seattle
Jen Segadelli , LM, CPM Seattle	Catherine Suter Olympia Treasurer	Audrey Levine , LM, CPM Olympia Legislative/Policy Chair	Cindi Thompson , LM, CPM Bothell
Tiff West-Schaub Olympia	Deborah Gleisner , ND, LM Mountlake Terrace Birth Center Chair	Laura Kuhs , LM, CPM Port Orchard	April Haugen , MSM, LM, CPM Ellensburg
Louisa Wales , LM, CPM Bainbridge Island Reimbursement Chair	Kristin Eggleston , LM, CPM Prosser Member Services Chair	Taylor Hamil , LM, CPM West Seattle Indications Chair	Desa Hauch Bothell
Meghann McNiff Seattle Secretary	Christine Tindal , LM, CPM West Seattle QMP Liaison	Lisa Stotts , LM, CPM Buckley Conference Chair	Emily Stephens Olympia Vice President, outgoing
2017 student representatives to be determined	Emmy Burns Student midwife		Valerie Sasson , LM, CPM Kenmore President, outgoing

Equity and Inclusion Values Statement

We, the Board of Directors of the Midwives Association of Washington State, recognize that there is inherent strength and essential value in attaining equity in racial, geographic, and gender representation in our Board membership. We stand in awareness that our fullest capacities in leadership—and in building the profession—will be reached as we strive for and commit to the fullest representation possible of Washington's midwives and the families they serve.

In full recognition that leadership is a privilege, we as a Board envision and commit to removing barriers to Board membership that arise out of racial privilege and institutionalized racism, misplaced and outdated gender norms that contribute to gender inequality and the marginalization of those who are not cisgender women, and geographical distances that have prevented full participation of Washington's midwives in the past.

We believe that the full realization of these values among our Board leadership is one step in bringing the midwifery profession as a whole, its individual professional members, and midwifery consumers to an increased level of quality, access, collaboration, and unity that it is our goal as a community to achieve. (Approved 06/03/16. Scheduled for review in June 2018.)

Committee News

BIRTH CENTER COMMITTEE

2016 Accomplishments

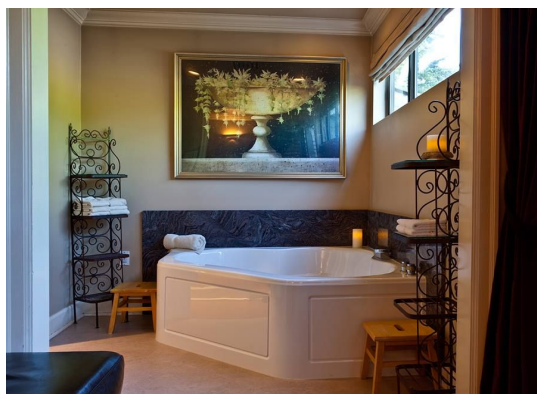
- Helped Coordinate the Breastfeeding Friendly Birth Center campaign with the DOH.
- Began speaking to birth center owners about how to best represent and support them through our professional organization.
- Legislative bill to increase birth center facility fee reimbursement (still in progress).

Goals for 2017

- Increase MAWS Birth Center Membership through outreach to birth center owners
- Washington Birth Centers re-branding/marketing campaign.
- Finalize increase in Medicaid reimbursement for facility fees.
- Fight hospitals' rebranding of their L&D as Birth Centers. This is very important work for both birth center owners and LMs. Help MAWS help you by becoming a Birth Center Member.

Co-Chairs:

Deborah Gleisner & Louisa Wales
birthcenters@washingtomidwives.org



[Get your Birth Center Membership!!](#)

MEMBER SERVICES

Kristin Eggleston
509-780-3330
membership@washingtonmidwives.org

[Send me an email](#) with any profile, membership, CEU, or email question. I can help!

2016 accomplishments

- NEW database for quick and accurate profile management, member directory, online dues payment and tracking, and event registration!
- Outreach to current and new LMs and CNMs in the state.
- Increased administrative coordination
- Member pricing on Masimo supplies

2017 hopes and dreams

- Increase use of Wild Apricot by members as they host regional events such as peer review
- Support revision of MAWS website and its SEO optimization
- Increase membership numbers, services, and options
- Outreach to midwifery schools

HOME JOIN US DONATE EVENTS CONTACT DIRECTORY



www.maws.wildapricot.org

This is our database website!

Check your profile

Register for events

Get Masimo products

NOMINATIONS COMMITTEE

Audrey Levine, LM, CPM - Retired
(360) 701-9194
audrey.e.levine@gmail.com

Accomplishments in 2016

Aware of the impending transition in the MAWS leadership this fall, we began identifying and recruiting prospective board members and officers back in the spring. While we know that Valerie and Emily, our President and Vice-President for the past 4 years, are an irreplaceable dynamic duo, we are thrilled that Neva Gerke and Sarah Joy Day have stepped forward to fill Valerie and Emily's really big shoes, bringing new energy and a deep commitment to advancing midwifery in WA State.

We are also incredibly fortunate to have Catherine Suter, a consumer member with impressive financial management experience and a heart of gold, continuing as Treasurer, and Meghann McNiff, a returning Board member—now with an adorable baby in tow—running for the role of Secretary, filling out our Executive Committee.

In addition, the following people were re-elected to the MAWS Board this fall: Audrey Levine, Christine Tindal, Kristin Eggleston, Louisa Wales, and Taylor Hamil. They are joined by Cindi

Thompson, Deborah Gleisner, Laura Kuhs, and Lisa Stotts, who will all be staying on the Board and serving the second year of their 2-year terms.

Finally, we want to welcome Jen Segadelli, Tiff West-Schaub, and Tinneca Fortin—our newly elected Board members. What an incredible group of dedicated leaders!!!

CONFERENCE COMMITTEE

Lisa Stotts
503.551.5605
lisa@mavenmidwife.com



Accomplishments in 2016

- Created and hosted two successful conferences.
- Obtained ACNM CEU approval for CNMs.
- Included the LMA skills practice in the conferences.
- Found One Baby Goat a Safe Home!

Committee Needs for 2017

- Membership suggestions for educational topics.
- Ongoing help with speaker recruitment and referrals.
- Leader for outreach & advertising.

Hopes and Dreams in 2017

- Restructure the committee for sustainability.
- Implement a new CEU schedule format and conference offerings to better serve MAWS members.
- Incorporate a better balance of art, science, education and socialization during the conferences.
- Bring small skills training sessions to locations across Washington.

Come join our exciting committee!

LEGISLATIVE & POLICY COMMITTEE

Audrey Levine, LM, CPM - Retired
(360) 701-9194
audrey.e.levine@gmail.com

New members are welcome. We have bi-weekly conference calls, which become weekly in the month before Lobby Day.

Accomplishments in 2016

LOBBY DAY 2017: FRI, FEB 10
TRAINING WEBINAR: THURS, FEB 2
[Register now](#)

Hopes and Dreams for 2017

- Have a GREAT turnout on MAWS Lobby Day and get the HCA recommended increase in the Medicaid reimbursement rate for the

- Advocated for increased Medicaid reimbursement for the birth center facility fee.
- Successfully lobbied for a budget proviso directing the Health Care Authority (HCA) to review its methodology for setting the Medicaid reimbursement rate for the birth center facility fee.
- Worked collaboratively with the HCA on the agency's recommendations and on the language in the report to the legislature (submitted in mid-October).
- *The HCA report, which recommends increasing the Medicaid reimbursement rate for the birth center facility fee from the current \$605 to \$1,742 (!) has the potential to be as influential a document as the 2007 Cost-Benefit Analysis, both within WA State and nationally*
- Worked with the Midwifery Program Manager at the Department of Health on the rules language necessary to implement the provisions of HB 1773 (creating a bridge between the CPM credential and licensure in WA State; mandatory peer review, continuing education, and data collection).
- There are currently 168 LMs in WA State; an increase of 40% since the passage of HB 1773 in 2014 (!).
- Providing support for the formation of a WA-State NACPM Chapter to work alongside of MAWS on legislative issues for CPMs both in WA and nationally.

- birth center facility fee into both the House and the Senate versions of the budget
- Get Licensed Midwives included in the Pharmacy Act so that we can add legend drugs and devices to our rules that have been recommended by the Midwifery Advisory Committee
- Help get a robust version of the Pregnant Workers' Fairness Act passed
- Work with the Birth Center Committee to pursue a DOH complaint against WA hospitals opening birth centers that are not licensed as birth centers



RESEARCH & DATA

So far 2,517 MAWS records have been entered into the OB COAP database! These records are being examined alongside those of hospital-based providers to look at demographics, interventions, and outcomes. Want to see the numbers from MAWS, WA hospitals, and national stats? Attend the free webinar. Due to confidentiality, only MAWS members will be able to attend the webinar.

MAWS DATA WEBINAR!

January 19th, 9-11am

[Register now](#)

QUALITY MANAGEMENT PROGRAM

Marge Mansfield, LM, CPM, Coordinator, King
 Laurie Braunstein, LM, CPM, Chelan
 Stacey Callaghan, LM, CPM, Thurston

**SENTINEL EVENTS:
 REMEMBER TO SELF-REPORT!**

- Maternal Mortality

Winni McNamara, LM, ARNP, CPM, Skagit
Loren Riccio, ND, LM, CPM, King (Eastside)
Christine Tindal, LM, CPM, MSM, King
Ann Tive, LM, Whatcom

RETIRING: Peggy Thurston is retiring from the QMP committee after MANY years of service and will be greatly missed.

“HIRING”: We are actively searching for a replacement from Kitscap or Jefferson Co.



Accomplishments in 2016

- Revision of governing document and creation of an internal procedures manual.
- Implementation of a feedback form to complete after an Incident Review Panel. We have received overwhelmingly positive feedback regarding the supportive, collaborative review process.
- Fostering a supportive and collaborative incident review process. We now have a QMP member acting as the panel leader at each incident review.
- QMP members are selected to represent diverse educational and geographical backgrounds.
- Revised Self Report and Complaint forms coming to your inbox and the website.
- Be on the lookout in 2017 for an email indicating your PR status and individual tracking form!

- Perinatal Mortality
- Maternal shock
- Uterine rupture
- Maternal/neonatal seizure
- Uterine inversion
- NICU or Special care nursery admissions within 72 hours of birth (except for observation &/or congenital anomalies)

PEER REVIEW REQUIREMENTS

- For all Professional MAWS members, regardless of malpractice coverage.
- Each member completes PR of 5 of their own charts every 2 years. May be done at one PR every 2 years, or at multiple PR over 2 year period.
- It is vitally important that a PR be official and therefore protected. PR Coordinator must pre-approve all participating midwives: all attendees must be MAWS members with current membership status.
- EACH participant, whether presenting a case(s) or just acting as a reviewer, MUST sign a confidentiality agreement.
- An aggregate data form must be completed at EVERY PR.
- PR certificates will only be issued after these forms are submitted to Coordinator.

CONTACT

MAWS
attn: QMP
2120 N. Oakes St.
Tacoma, WA 98406

Peer Review Coordinator: Christine Tindal, email to set up PR, get current PR forms:
MAWSPeerReview@gmail.com

General questions:
gmp@washingtontmidwives.org

Midwife of Wisdom Award: Celebrating 25 Years

Cynthia Jaffe, LM

At our Fall Conference 2016, Cynthia was presented with our annual Midwife of Wisdom award. Cynthia Jaffe has been a licensed midwife on Whidbey Island for 25 years.

A graduate of the Seattle Midwifery School, Cynthia has trained many students over the course of her long career. Not including the births that occur in the military hospital, she currently attends about 30% of the births in her county.



Whidbey Record, Tue Oct 11th, 2016



Congratulations, Cynthia! And thank you for your many years of service to WA State families!

Greenbank Women's Clinic & Birth Center
Whidbey Island
www.greenbankbirthcenter.com



MAWS Award 2016

We are pleased to announce the recipient of this year's award...our very own Val Sasson! The MAWS award has traditionally been given to a supporter of midwifery outside of the midwifery profession. However, Val's leadership has been so exceptional it's only fitting that she be recognized in this exceptional way.

Valerie Sasson, LM, CPM recently completed her second term as President of Midwives Association of Washington State (MAWS), and over the past 4 years has been a fierce and tireless advocate on behalf of midwives, birth centers, and childbearing families. Under her leadership, one of the most significant pieces of midwifery legislation in the state's history passed in 2014. The passage of HB 1773 resulted in a dramatic increase in the number of CPMs achieving licensure in Washington over the past 2 years and also put in place three key mechanisms for promoting accountability in our profession: mandatory peer review, mandatory continuing education, and mandatory data collection. In addition, Valerie has led with integrity MAWS' efforts to become a more socially just and aware organization. Her commitment to health equity, racial justice, and gender inclusivity runs deep. It informs every aspect of her work and is an inspiration. Finally, Valerie has shared her knowledge and expertise at the national level, as a participant at the Home Birth Summit in Seattle and as a presenter at the MANA conference in 2015.



Contact Info

Committee	Chair	Contact
Conference	Lisa Stotts, LM, CPM, MSM	conference@washingtonmidwives.org
Legislative/Policy	Audrey Levine, LM, CPM	audrey.e.levine@gmail.com
Birth Centers	Deborah Gleisner, ND, LM Louisa Wales, LM, CPM	birthcenters@washingtonmidwives.org
Reimbursement	Louisa Wales, LM, CPM	reimbursement@washingtonmidwives.org
Member Services	Kristin Eggleston, LM, CPM	membership@washingtonmidwives.org (509) 780-3330
Nominations	Audrey Levine, LM, CPM	audrey.e.levine@gmail.com
Quality Management Program	Marge Mansfield, LM, CPM	General: gmp@washingtonmidwives.org Peer Review: mawspeerreview@gmail.com
Data and Research	Emily Stephens	info@washingtonmidwives.org
Development	Sarah Joy Day, LM, CPM	development@washingtonmidwives.org
Indications Document	Taylor Hamil, LM, CPM, MSM	info@washingtonmidwives.org
Equity	Jen Segadelli, LM, CMP	info@washingtonmidwives.org
<p>General contact information for MAWS</p> <p>2120 N Oakes St Tacoma, WA, 98406 1-888-4ABIRTH</p> <p>www.washingtonmidwives.org info@washingtonmidwives.org</p>		