



Laryngeal Mask Airway: Implications for WA State LMs

JESSICA EDENS

MAWS CONFERENCE, SPRING 2015

Laryngeal Mask Airway

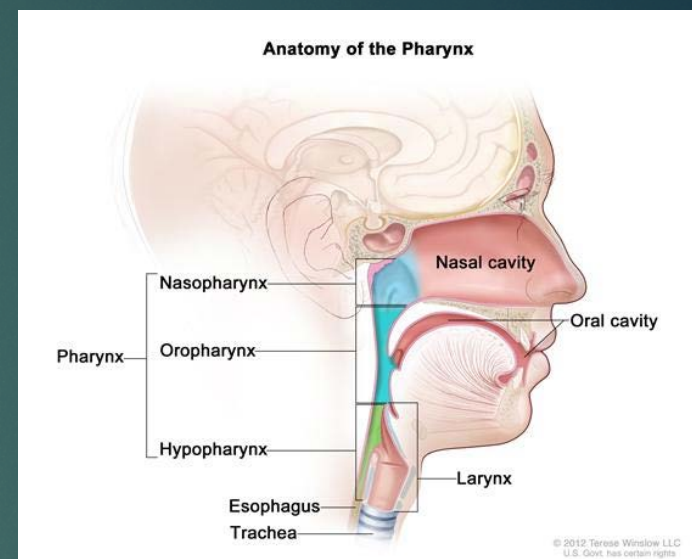
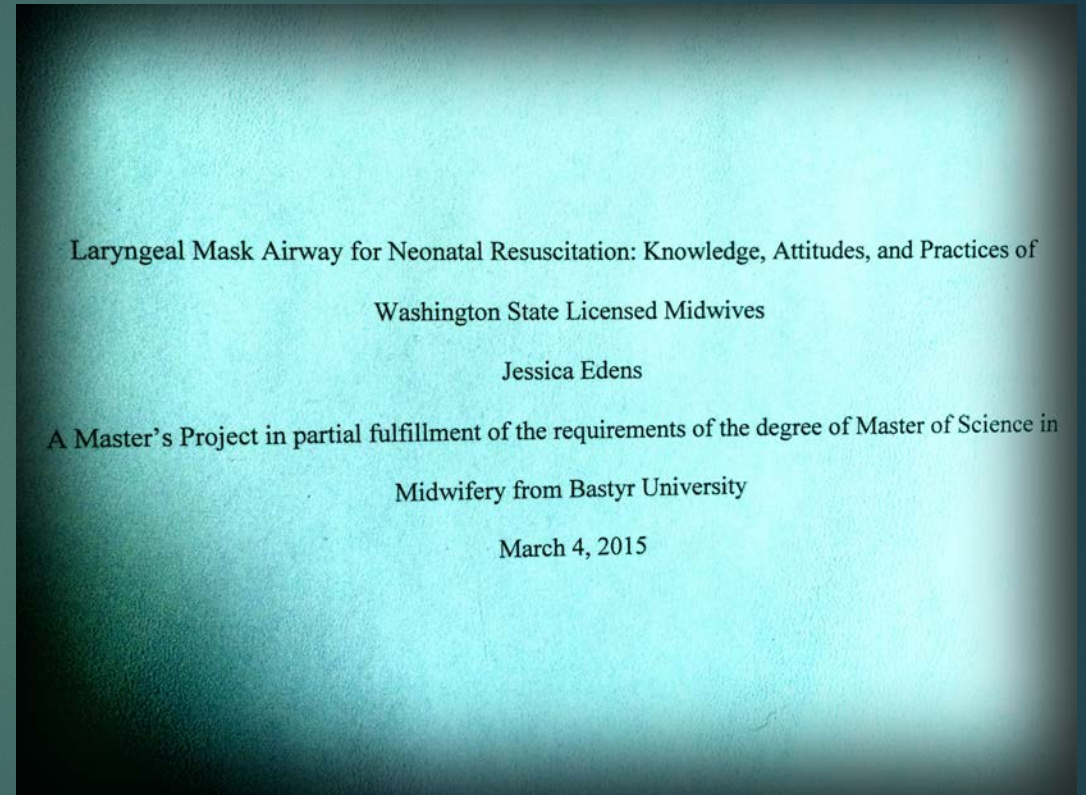


Photo credits available by request.

Research Overview

- ▶ Personal Interest
- ▶ Literature Review
 - ▶ Meta-Analysis
- ▶ Recruitment
 - ▶ 60 LMs, 11 responses, 7 interviews
- ▶ Interviews
- ▶ Results
 - ▶ 2 LMs had training
 - ▶ 5 LMs interested in training



Is the LMA effective?



509 singleton newborn 34 weeks gestation or greater, 4 RCTs

275 LMA	234 BMV
4 (1.4%) needed ET	28 (12%) needed ET
4 (1.4%) unsuccessful	31 (13.2%) unsuccessful

Is the LMA safe for LMs to use?



52 paramedics, 2 hours training

	ETT	LMA
Insertion time	46s	23s
Incorrect placement	34%	9.5%
Provider preference	12	40

Is the LMA recommended?



Supported by **American Academy of Pediatrics** and **American Heart Association**

- Chapter 6
- “should be present at all births”

European Resuscitation Council: “In the absence of personnel skilled in tracheal intubation, a supraglottic airway device (e.g. LMA) is an acceptable alternative.”

Kattwinkel, J. (Ed.). (2011). Neonatal resuscitation (6th ed.). Elk Grove Village, IL: American Academy of Pediatrics.

Nolan, J., Soar, J., Zideman, D., Biarent, D., Bossaert, L., Deakin, C., Koster, R., Wyllie, J., & Bottiger, B. (2010). European resuscitation council guidelines for resuscitation 2010. *Resuscitation*, 81(10), 1219-1276. Retrieved from <http://www.sciencedirect.com.buprox.bastyr.edu:2048/science/article/pii/S0300957212007496>

Is the LMA in the LM scope of practice?



Video



Where can I receive further LMA training?

- ▶ Anywhere you can take the entire NRP course
 - ▶ UW Isis lab
 - ▶ Swedish
 - ▶ Seattle Children's
 - ▶ Sacred Heart Medical Center, Spokane